

s4engineering.co.uk



From small projects to turnkey solutions, **S4 Engineering** is your ideal partner.

# Introducing S<sup>4</sup>Engineering Ltd

Service • Support • Supply • Solutions

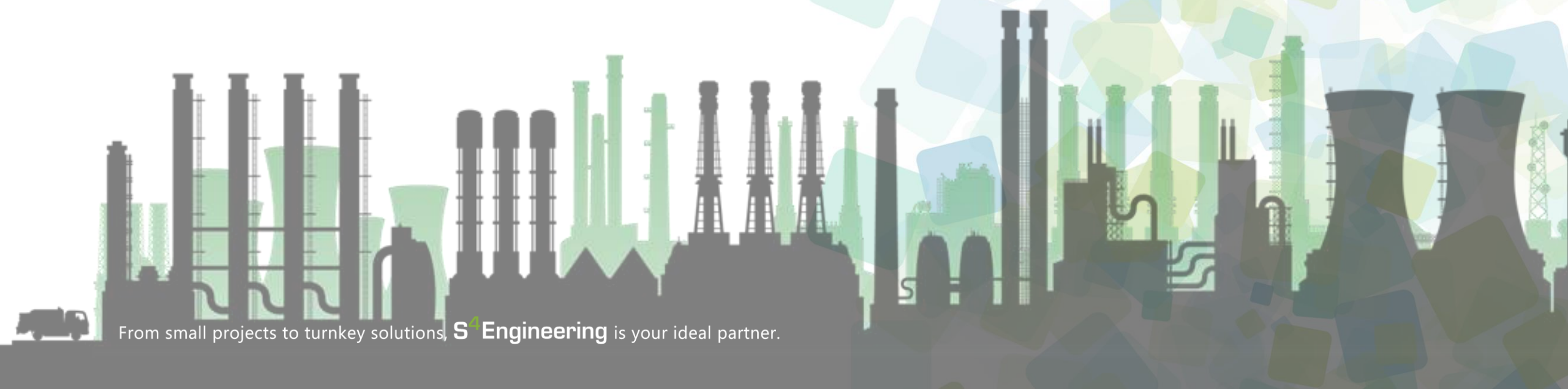


**Your ideal partner for design, equipment supply, project management, commissioning and support services.**

S<sup>4</sup> Engineering is a leading liquid and powder process solution, equipment, spares and consumable supplier to a wide range of industries throughout the UK and overseas. These include; food, beverage, brewery, bakery, dairy, utilities, and personal care & cosmetics.

Whether you are looking for initial consultation or require a specialist fabrication and engineering service. S<sup>4</sup> Engineering offer a competitive service which will assist in effectively meeting all your engineering requirements.

From small projects to turnkey solutions, S<sup>4</sup>Engineering is your ideal partner.



# Introducing **S<sup>4</sup>Engineering Ltd** Service • Support • Supply • Solutions

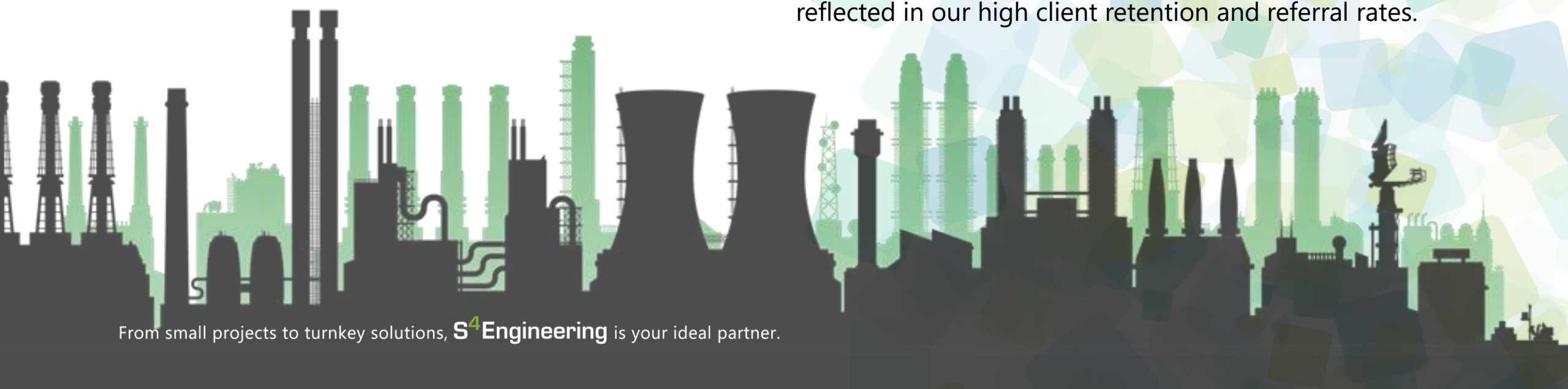


We pride ourselves on understanding customer needs and provide an integrated, focused and independent single source for the procurement of equipment and spares, whether mechanical, electrical, instrumentation or control.

The customer's business and peace-of-mind comes first. We recognise the challenge industries face in meeting plant performance, operational efficiency and the need to keep costs down. We aim to provide a high level of service and technical expertise to assist customers in reducing their operating costs.

Our highly experienced, multi-skilled project engineering team provide process, packaging, mechanical, electrical and automation skills into one coordinated activity, both on-time and within budget. We pay great attention to detail in every aspect of our design, manufacture and installation service, which is reflected in our high client retention and referral rates.

From small projects to turnkey solutions, **S<sup>4</sup>Engineering** is your ideal partner.





## Company Philosophy

S<sup>4</sup> Engineering's company philosophy is offering its customers the best possible service and support - your ideal partner for design, equipment supply, project management, commissioning and support services.

Also not only are we your ideal partner because of the services listed above, we also can offer maintenance/repair of all your process equipment, along with the following:-

- ✓ **Hygienic Design**
- ✓ **Commissioning**
- ✓ **Validation**

From small projects to turnkey solutions, **S<sup>4</sup>Engineering** is your ideal partner.

## Mission

Our mission at S<sup>4</sup> Engineering is to provide innovative and efficient process engineering solutions to the food, beverage, cosmetic, pharmaceutical, and industrial sectors; while delivering exceptional customer service and dedicated support.

We strive to improve the production processes of our clients through the use of cutting-edge technology and expert knowledge, in order to enhance the quality and safety of their products, increase their operational efficiency, and reduce their environmental impact.

# S<sup>4</sup> Company Values



## Service Excellence

We are committed to providing the highest quality of service to our customers, always striving to exceed their expectations with professionalism, teamwork, and continuous improvement.



## Supportive Relationships

We believe that the foundation of our success lies in building strong, supportive relationships with our customers, partners, and employees based on integrity, respect, and empathy.



## Supply Chain Integrity

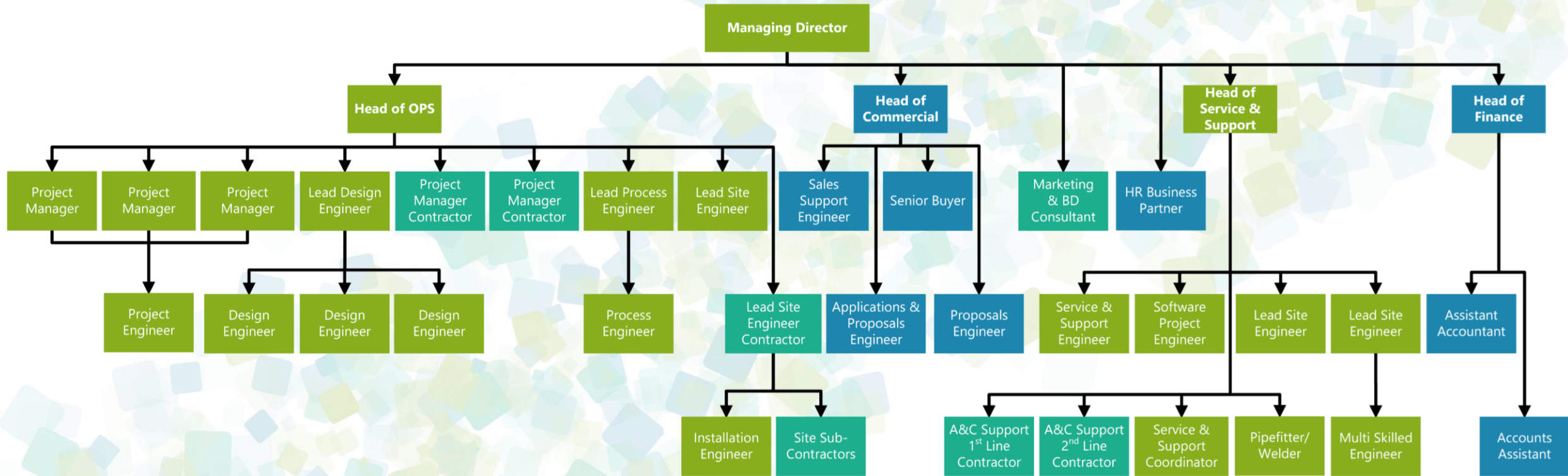
We are dedicated to maintaining the highest standards of honesty, transparency, and accountability throughout our supply chain, ensuring that our products and services are of the highest quality and meet the needs of our customers.



## Innovative Solutions

We are passionate about delivering innovative solutions that meet the evolving needs of our customers, leveraging cutting-edge technology, and continuous improvement to stay ahead of the curve.

# Business Structure 2023



From small projects to turnkey solutions, **S4 Engineering** is your ideal partner.

## Meet Some of the S<sup>4</sup> Team

### Shane Few

CEO



Mechanical and Process Engineer including vessel design and build, pipework installations, service and support. Loves golf and a keen football fan.

### Stuart Earl

Managing  
Director



Moved to S<sup>4</sup> in 2020 from food manufacturing, specialising in ready meals, soups, sauces, salads, desserts, and mayonnaise for multiple retailers. Enjoys running and loves dogs.

## Andrew Malton

Head of Operations

Highly experienced in the food manufacturing industry, having installed and commissioned huge projects within the UK and overseas. Enjoys playing football & watching cricket.



## Neil McIlwain

Head of Commercial

Experienced Engineer & Project Manager skilled in managing multi-million-pound projects for the food, drink, chemical, & FMCG industries, including building and construction, with extensive process knowledge. A keen low-handicap golfer & football fanatic.



## Tanya Mirenska

Head of Finance

Background in logistics & food manufacturing, moving into the finance sector & developing core processes to give data to steer the business plan. Joined S<sup>4</sup> in early 2022 and is now part of the SLT. Enjoys time with family & cycling.



## Lewis Binney

Head of Service & Support

Fully qualified Multi-Skilled Electrical Engineer with vast knowledge & experience working on software programs, PLCs, and HMIs. Previous roles have taken him worldwide. Enjoys golf & home DIY.



## Bill Watson

Project Manager

A Project Manager with over 30 years of experience in the food, beverage, & pharmaceutical industries, specialises in vessels, pipework, & steam system design, installation, & commissioning. Enjoys cycling & watching motor sports.



## Chris Crowley

Lead Process Engineer

MEng in Chemical Engineering with a background in food process engineering, risk management, CIP systems, & hygiene equipment standards. Solutions-oriented team player who enjoys e-sports & cooking.



## Steve Knight

Design Engineer

Design Draughtsman/Engineer with experience in the high-volume Domestic Appliance Industry & 12 years experience in liquid & dry materials, handling projects in the Food Processing & Handling Industry. A Liverpool fan who also enjoys cycling & walking.



## Sam Johnstone

Process Engineer

MEng Mechanical Engineering Graduate with experience in hygienic design, plant commissioning, & root cause analysis. Enjoy playing the saxophone & bass guitar.



From small projects to turnkey solutions, **S<sup>4</sup>Engineering** is your ideal partner.





# Health & Safety

**S<sup>4</sup> Engineering take health & safety seriously and ensure work is completed in the safest possible manner at all times.**

We are very proud to say we have been Safe Contractor Approved since 2015, and are members of HS Direct Safety First Package.

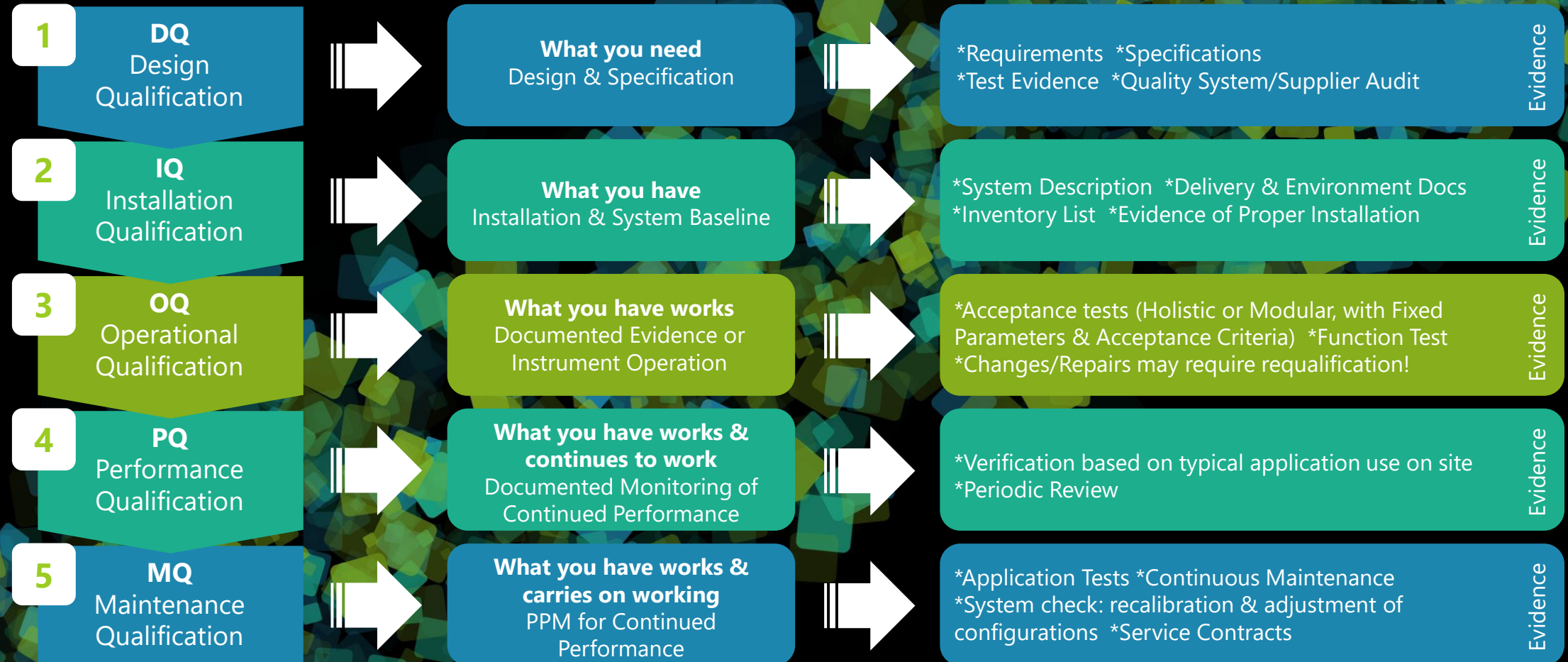


We are also very proud to say we have **NO** reportable accidents, incidents, or health & safety issues to date.



From small projects to turnkey solutions, **S<sup>4</sup> Engineering** is your ideal partner.

# The 5 Steps of Equipment Qualification



# Preferred Suppliers

S<sup>4</sup> Engineering are proud to be selected as preferred suppliers to the following companies:

## 2 Sister Food Group

All Ready Meals Factories  
(Preferred Process  
Engineering  
Company).



## Bakkavor

Fresh Prepared Foods (Preferred Process  
Engineering Company).



## Jordan Ryvita

Cereals (Preferred Liquid Process  
Engineering Company).



## Silverspoon

Sugars/Syrups (Preferred Process Engineering  
Company).



**Additionally, S<sup>4</sup> supply  
the following works/  
support to various other  
sites across the UK:**

- ✓ Onsite Maintenance & Installation Team
- ✓ Mechanical, Electrical, Software, & SCADA Support Contracts
- ✓ 24/7 Service & Support

From small projects to turnkey solutions, **S<sup>4</sup>Engineering** is your ideal partner.



# S<sup>4</sup> Locations

## UK

Quick turnaround steelwork, components, refurbishments and vessels

## Portugal

Large vessels and platforms  
Kettles and mixing vessels  
CIP Systems

## Bulgaria

Large scale atmospheric and pressure vessels and silos



From small projects to turnkey solutions, **S<sup>4</sup>Engineering** is your ideal partner.

# The S<sup>4</sup> Manufacturing Facility



From small projects to turnkey solutions, **S<sup>4</sup> Engineering** is your ideal partner.

# Industries



✓ Food & Beverage



✓ Milk & Dairy



✓ Personal Care & Cosmetics



✓ Confectionery & Desserts



✓ Industrial & Chemical



✓ Overseas

# Solutions



✓ Cooking



✓ Melting, Heating & Cooling



✓ Mixing & Blending



✓ Storage, Holding & Transfer



✓ CIP (Clean in Place)



✓ 3D Scanning



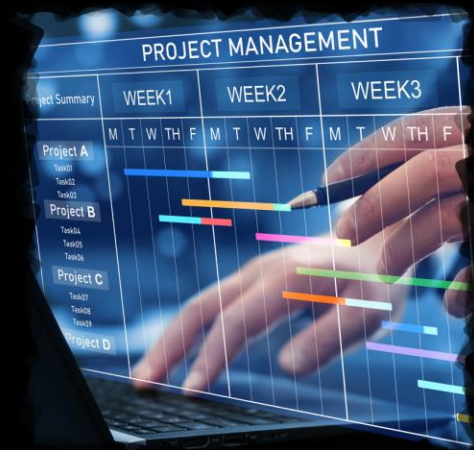
✓ Hygienic/ Service Pipework



✓ Control & Automation



✓ Service, Support, & Spares



✓ Project Management

# Cooking - Product Range & Technologies



## Inclined Mixing Kettle

Our inclined kettles are specifically designed for cooking and mixing products that require multiple ingredients. The tilted mixer/scrapper assembly allows plenty of room for a smaller access hatch and an automated shoot, often used in combination with a bin lifter or conveyor feed.

## Vertical Mixing Kettle

S4 Engineering can supply Vertical Mixing Kettles that provide a cost-effective alternative for any gentle but thorough agitation requirements.



## Pressurised Cooker

S4 Engineering's Pressurised Kettles are especially designed to maximise the batch processing of food products using pressure cooking techniques.

## Horizontal Mixing Kettle

Horizontal Mixing Kettles are designed for the gentle cooking and blending of food products containing fruit and vegetables such as potato salad and coleslaw.



## Platforms

S4 Engineering can design, manufacture, and supply access platforms to provide safe and easy access to your process equipment.

## Tilting Kettle

Our Tilting Kettles are designed and manufactured for small batch processes that do not require an extensive pump and pipework infrastructure.



From small projects to turnkey solutions, **S<sup>4</sup> Engineering** is your ideal partner.



# Soup & Sauces Cooking Facility - Past Work



# 1500L Jacketed Cooking Kettle - Past Work



# Melting, Heating & Cooling - Product Range & Technologies



## Cooling Vessels

S4 Engineering supplies a range of cooling tanks of different capacities.

## Cook, then Chill

For the production of rice, pasta, vegetables and pulses, requires specialist equipment to Cook, then Quench and finally Chill the product. S4 engineering can deliver.



## Scrape Surface

S4 Engineering can identify, supply and install the exact specification SSHES needed to meet your process requirements.

## Steam Injection

Steam is the most energy efficient, reliable and flexible way to transfer heat into many food and beverage operations.



## Tubular/Plate Heat Exchangers

S4 Engineering offers a wide range of Heat Exchangers that provide efficient heat transfer for improved performance.

## Hot Water Set

In instances where the hot water or steam supply is inadequate or not available at all, S4 Engineering can provide a Hot Water Set for your processing system.



## Melting Vessels

S4 Engineering can supply melting vessels that are ideally suited for the melting of solids such as chocolates, butter and gelatine into a more manageable liquid

# Melting, Heating, & Cooling - Past Work



# Full Line Install - Past Work



# Mixing & Blending - Product Range & Technologies



## Continuous Batch

S4 Engineering have all the processing equipment and technical know-how to provide continuous and batch production solutions for foodstuffs such as ketchups, sauces and mayonnaise.

## Powder blend

Powder Blend mixers disperse powders into liquids to create a consistent homogeneous product, time after time. The Powder Blend designs rapidly wet out and disperse a wide range of powders into liquid emulations.



## Powder Emulsifier

Powder Emulsifiers are specially designed for the fast mixing of powders and particulates with liquids to obtain low to medium viscosity products.

## Mixing Vessels

Stainless mixing vessels are especially designed and constructed for the blending of different ingredients together in variable sized batches.



## High Shear Mixers

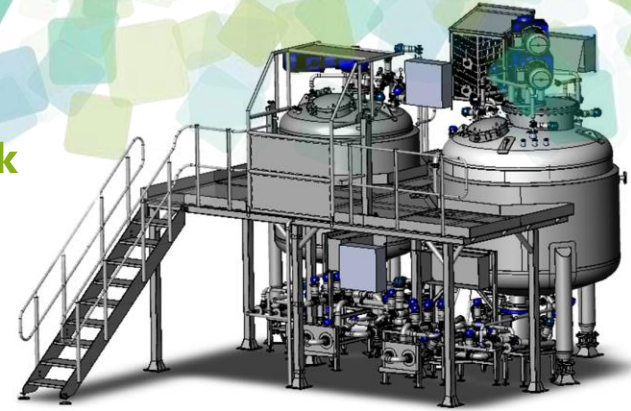
S4 Engineering can provide a range of quality high shear industrial mixers.

## Vacuum Mixing

S4 Engineering offer a wide range of bespoke pressurised and vacuum type mixing vessels.



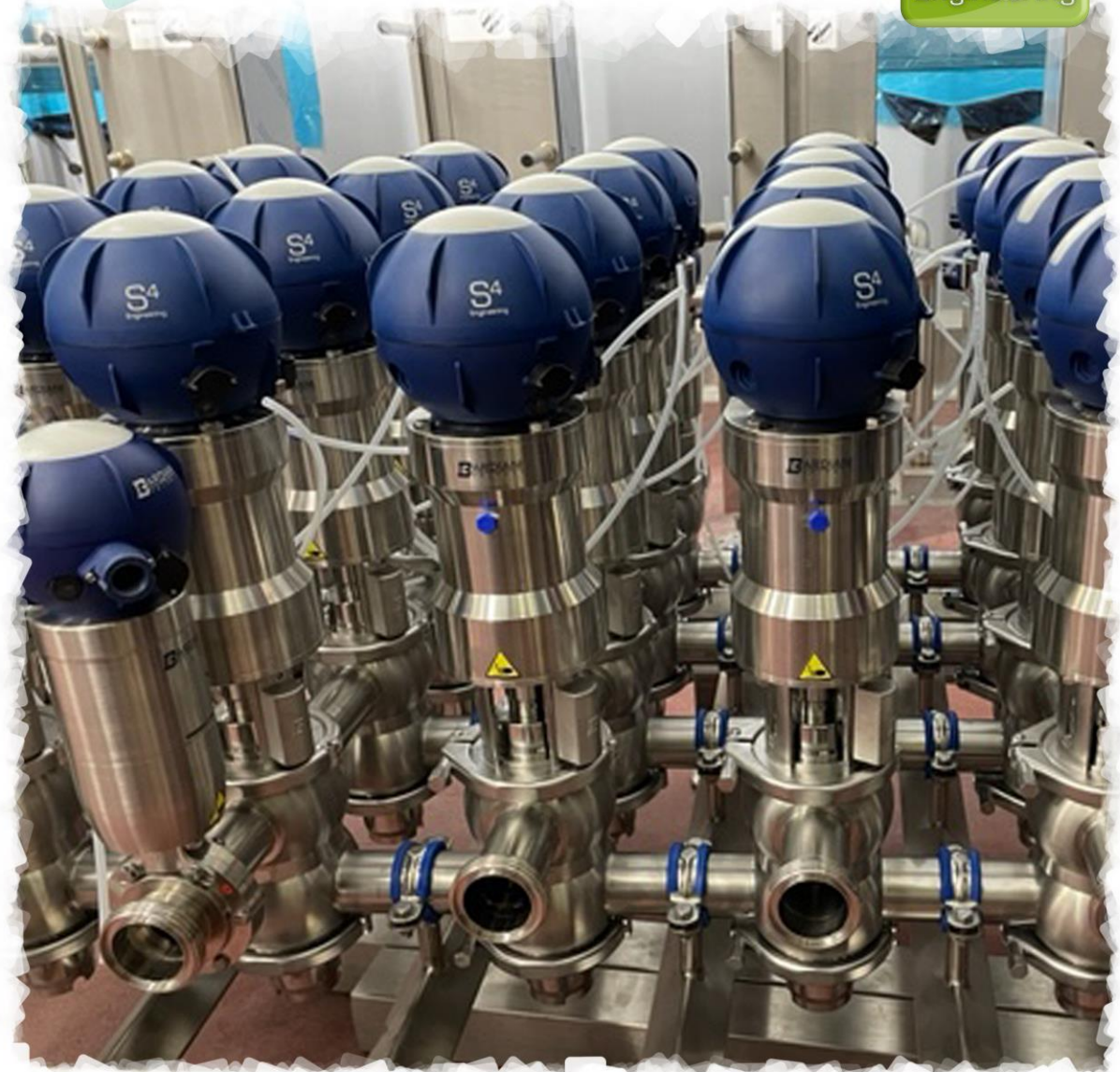
# Mixing (Cosmetic & Pharmaceutical Facility) - Past Work



# Valve Matrix

- Product Range & Technologies

- Past Work



From small projects to turnkey solutions, **S<sup>4</sup>Engineering** is your ideal partner.



# Storage, Holding & Transfer - Product Range & Technologies



## Storage Vessels

S4 Engineering has a library of designs for high quality storage vessels built specifically for the food and dairy sectors.

## Holding Vessels

S4 Engineering is regularly tasked with providing the means for holding liquid ingredients at set temperatures allowing them to be dosed into a system over a period of time.

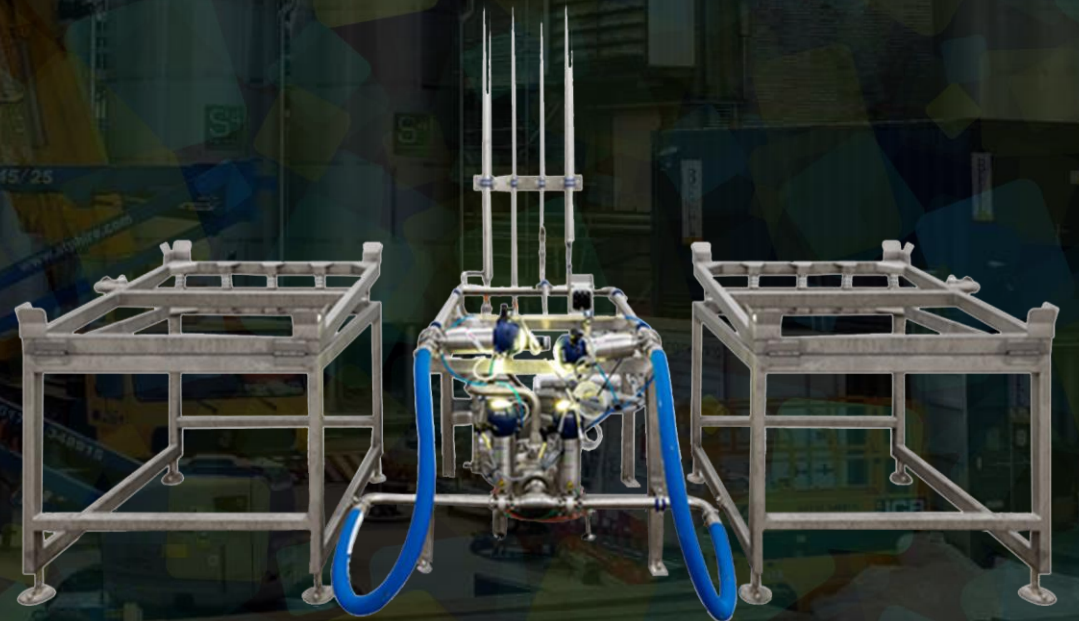


## Transfer Vessels

We offer many different versions of our stainless steel vessels, both static and mobile.



# Intermediate Bulk Containers (IBC)



From small projects to turnkey solutions, **S<sup>4</sup>Engineering** is your ideal partner.

# Storage, Holding & Transfer - Past Work



# Storage, Holding & Transfer - Past Work



# CIP (Clean in Place) - Product Range & Technologies



## CIP Audit

The CIP audit is an essential tool in mapping your system and developing the correct CIP strategy for a productive and hygienic system. To achieve this, the correct flow rates, temperatures, and detergent levels must be determined.

## Single Tank

There are many processes within the Food Beverage and Dairy Industries where a single tank CIP system provides the compact solution for the cleaning in place requirements of the production process.



## Two Tanks

The Two Tank CIP system provides the opportunity to recover and reuse wash solutions, especially where water supplies may be limited and there is a larger footprint available for the system.



## Multi-Tank

The Multi-Tank CIP system is an ideal solution where there is a need for high frequency of cleaning and flexibility to ensure that production plant is back on line and available as soon as possible.



## Multi-Channels

The multi-channel CIP system offers full flexibility providing the opportunity to clean various routes of process plant, such as pipelines, vessels, tanks, and heat exchangers, more independently.

## CIP Training

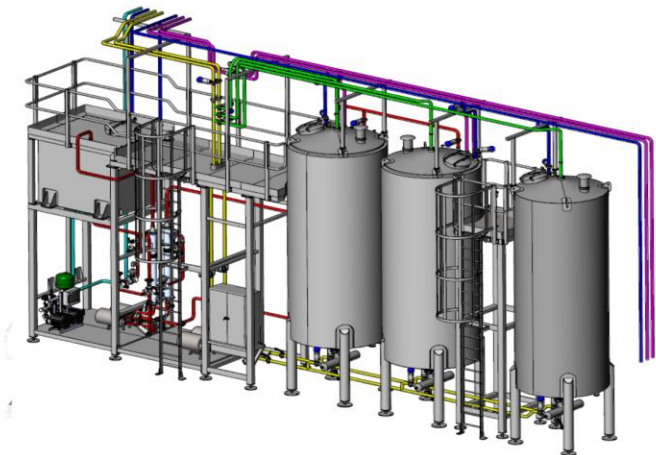
S4 Engineering Ltd can provide comprehensive training for your team from a basic introduction through to advance programs which can be included as part of a CPD plan.



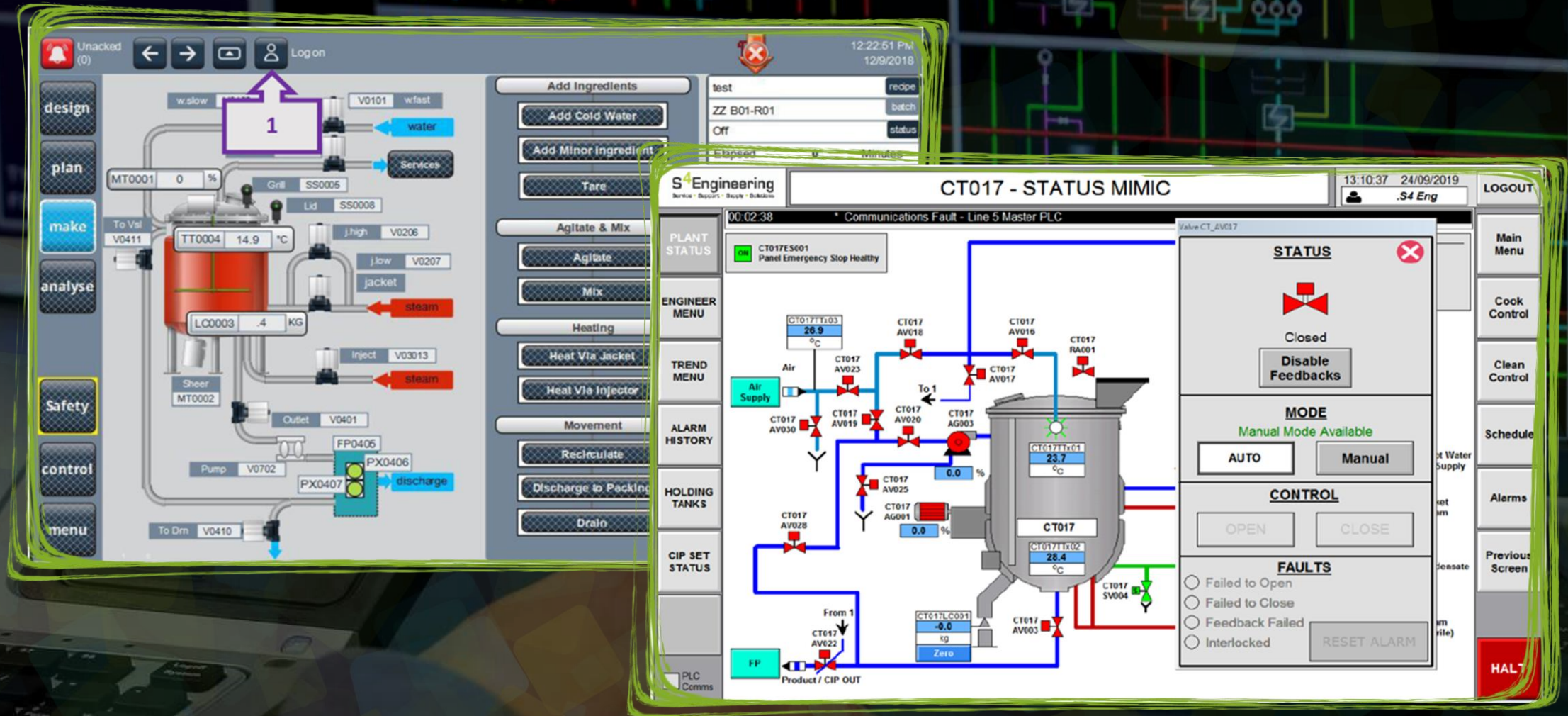
In Person Training

From small projects to turnkey solutions, **S<sup>4</sup>Engineering** is your ideal partner.

# CIP (Clean in Place) Set - Past Work



# Control & Automation- Past Work



The image displays a comprehensive industrial control system interface. On the left, a vertical sidebar contains navigation buttons: design, plan, make, analyse, Safety, control, and menu. The main area is divided into several functional sections:

- Process Overview:** A central diagram of a processing vessel with various inputs (water, steam, air) and outputs (discharge). A purple box labeled '1' highlights a specific input point.
- Control Panels:** Multiple panels for 'Add Ingredients', 'Agitate & Mix', 'Heating', and 'Movement', each with specific control buttons like 'Agitate', 'Mix', 'Heat Via Jacket', etc.
- CT017 - STATUS MIMIC:** A detailed schematic of a component (CT017) showing its internal structure, sensors (TT017, CT017), and actuators (AV016, AV017, AV018, AV019, AV020, AV022, AV023, AV025, AV028, AV030). It includes a 'STATUS' window showing 'Closed' and 'Disable Feedbacks', a 'MODE' window with 'Manual Mode Available' and 'AUTO/Manual' buttons, and a 'CONTROL' window with 'OPEN/CLOSE' buttons. A 'FAULTS' section lists potential issues like 'Failed to Open' and 'Feedback Failed'.

From small projects to turnkey solutions, **S<sup>4</sup>Engineering** is your ideal partner.

# Process Equipment & Spares

**S<sup>4</sup> Engineering recognises the challenges industries have to face in meeting plant performance, operational efficiency and the need to keep costs down.**

S<sup>4</sup> Engineering provides an independent single source for the procurement of process equipment and spares for the food, beverage and pharmaceutical industries.

With our extensive product and industry knowledge we can provide our customers with new, used and reconditioned process equipment from the world's leading manufacturers. Our technical experts will respond with advice and the team will ensure that deliveries are expedited to your exact instructions.

## We Supply:

- ✓ Valves
- ✓ Mixers
- ✓ Pipeline Products
- ✓ Vessels & Fabrication
- ✓ Retorts
- ✓ Heat Exchangers
- ✓ Pumps
- ✓ Steam
- ✓ Control & Instrumentation
- ✓ Used & Reconditioned Equipment
- ✓ Steam & Hot Water Boilers
- ✓ Level, Pressure, Flow Equipment



From small projects to turnkey solutions, **S<sup>4</sup> Engineering** is your ideal partner.



## Service & Support

**S<sup>4</sup> Engineering is a trusted supplier of servicing to the dairy, food, beverage, brewery, pharmaceutical and Industrial industries. Our objective is to help our customers enhance, improve and optimise their plant and equipment. This is achieved by our attention to detail in even the smallest component.**

With a highly skilled service team committed to always supplying the best of services, both in planned preventative service and emergency breakdowns, you can rest assured we will reduce downtime and increase performance of your plant and machinery.

S<sup>4</sup> Engineering provides national on-site cover for scheduled and un-scheduled maintenance and repair services including emergency call out. We can provide maintenance contracts and repair service for a wide range of plant and machinery.

From small projects to turnkey solutions, **S<sup>4</sup> Engineering** is your ideal partner.

### Typical plant and machinery include:

- ✓ Valves
- ✓ Pumps
- ✓ Heat Exchangers
- ✓ Mixers
- ✓ Steam Systems
- ✓ CIP Systems
- ✓ Filtration Systems
- ✓ Fillers
- ✓ Homogenisers
- ✓ Pasteurisers
- ✓ Steam & Hot Water Boilers
- ✓ Level, Pressure, Flow Equipment
- ✓ Control Equipment
- ✓ Instrumentation Repair

### Typical plant and machinery service includes:

- ✓ 4 levels of Contract Cover (**Bronze, Silver, Gold & Platinum**)
- ✓ Including **24/7 – 365** Days a year Support
- ✓ Supporting Equipment old (*existing*) and new
- ✓ Remote Support using VPN Routers
- ✓ Site Surveys and obsolescence reports
- ✓ Site software back ups and safe storage





**BAKKAVÖR**

Samworth Brothers

QUALITY FOODS

 **BRITISH SUGAR**

**Greencore**

**Refresco**

**THG** **reckitt**



**Laleham**  
Health & Beauty



**WE ARE CUSTOMER FOCUSED**  
**s4engineering.co.uk**

*Jacksons*  
OF YORKSHIRE

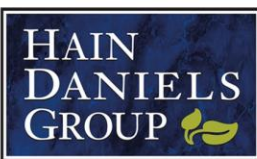
**NHS**



THE SILVER SPOON COMPANY



Unilever



Your Pet, Our Passion.®

